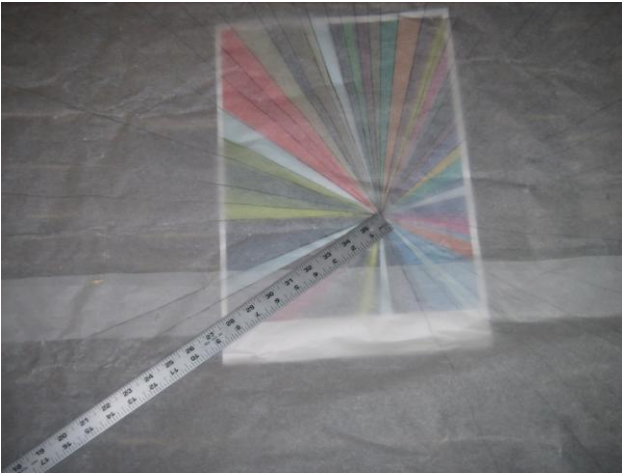


**Project picture:**



**Laying out the design:**



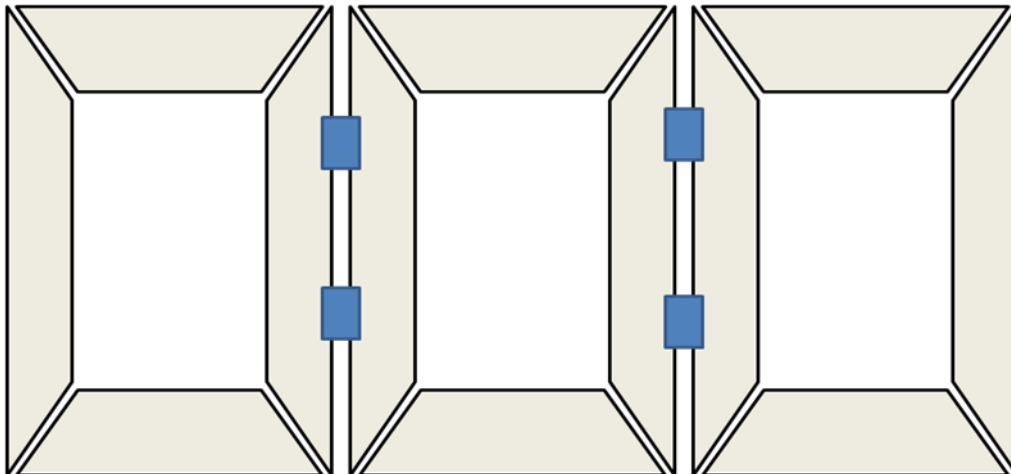
**Cutting triangles...lots of triangles!**



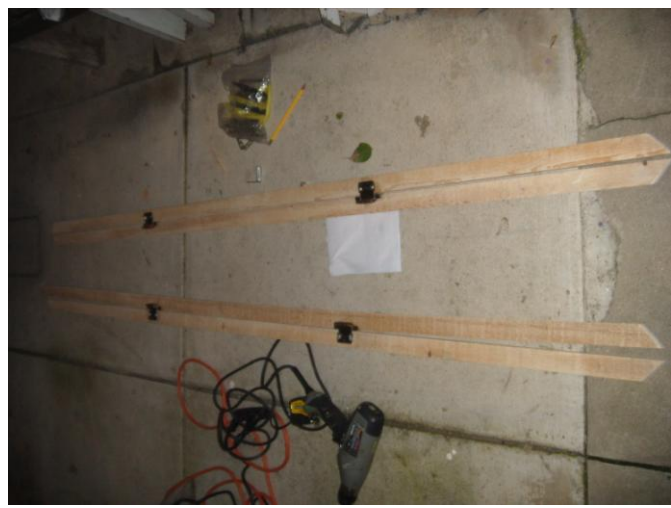
Building the frame – Step 1: frame “plans” shown with **NICE** hinges rescued from the trash (we’re green!):



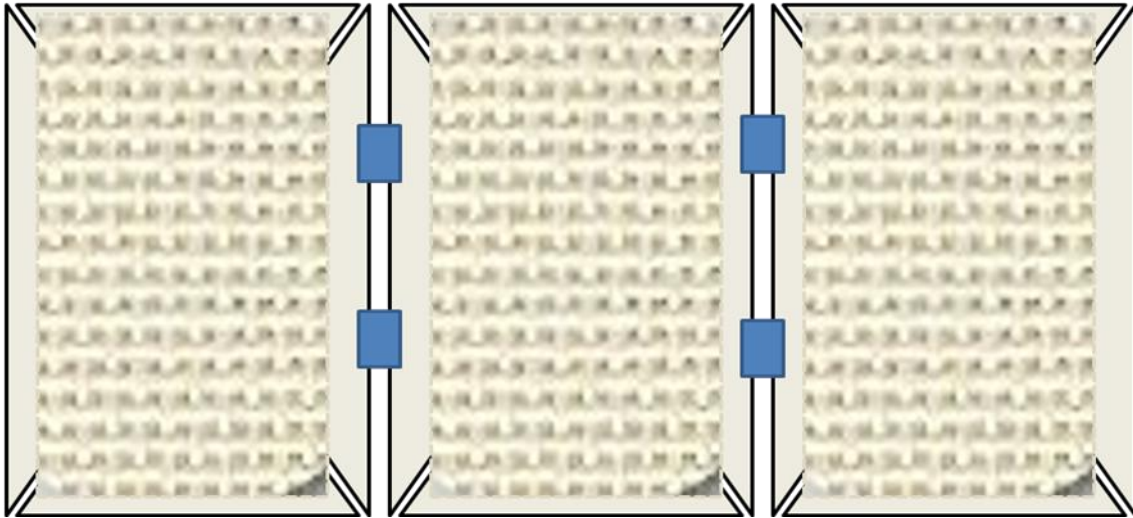
Frame plans explained - three sections attached with hinges which fold for mobility / stability:



Heavy duty equipment used – ran short on wood, but hinged parts done – frames folds in three!



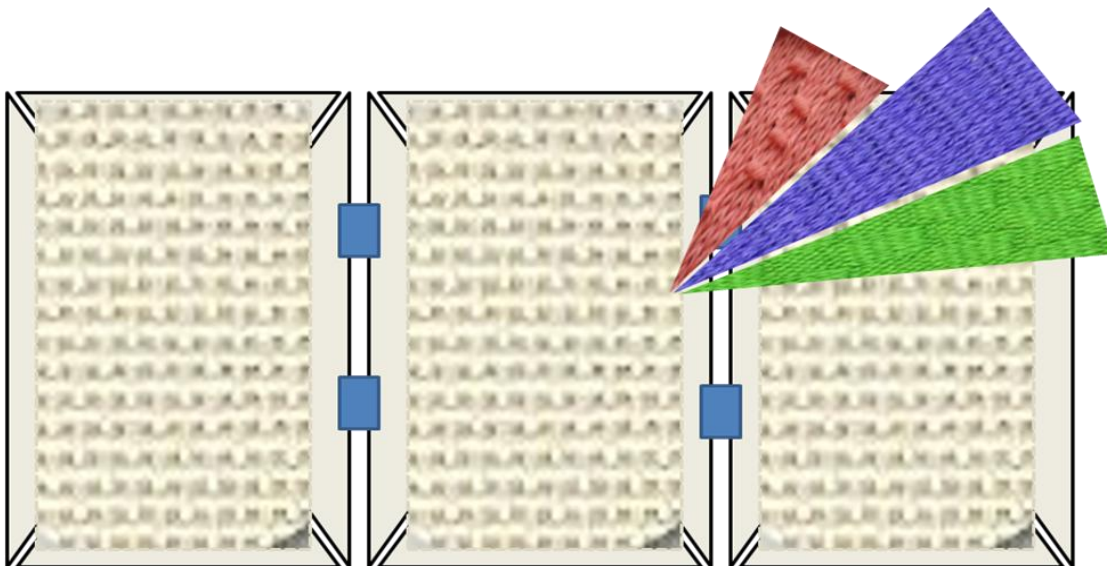
Step 2: "Needle point" backing will be stapled onto frame:



Close-up of "Needle point backing" onto which triangles will be stitched (the hardest part!):



Triangles to be stitched like so (some stuffed with filler for added texture!):



Working on frames at Nancy's . . .





